



ALERO™



adjustability
and support



ALERO™



Alero combines comfort and performance with exceptional value and design.



1960-2 High Back Knee-Tilter with adjustable Headrest, shown in GIG GIG1 Stone



1966-2 Upholstered High Back Knee-Tilter with adjustable Headrest, shown here and on cover in Sprinkle S104 Copper



1961-2 High Back Knee-Tilter (no Headrest), shown in GIG GIG1 Stone. Also, shown on cover in Momentum OHS Warmth OH12

In today's modern office where computer related activities are crucial, it is extremely important that one's choice in seating encourages comfort and productivity. Alero's fully upholstered or breathable mesh back and comfortable padded seat create the perfect blend of comfort and design. Many adjustable features and a choice of functional mechanisms ensure the chair will perform well. Choose a sophisticated Multi-tilter for computer intensive activities or a tilter chair for casual offices or meeting rooms. All chairs feature an adjustable lumbar support that allows the user to customize the comfort of the back.



Headrest is height and angle adjustable to suit your personal preferences.



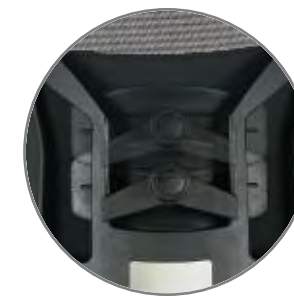
Chair frame Fibre glass reinforced nylon frame is very durable.



Back support is made from elasticized, breathable mesh material that provides comfortable support that contours to your body.



Arms are height adjustable and feature a "sliding armcap" that can be moved forward and rearward to provide better support for keyboarding.



Lumbar support can be moved up and down. Depth can be adjusted by turning the knob.



Standard Base is fiberglass reinforced black Nylon. Polished aluminum base is optional. **Casters** are available for both carpet or hard surfaces.



Multi-Tilter Forward and rearward seat tilt with infinite tilt-lock control and forward tilt lockout. Tilt tension control. Seat height adjustment.



Tilt Rearward tilt with upright position tilt-lock. Tilt tension control. Seat height adjustment.



Operator Two lever seat and back angle adjustment. Seat and back adjust independently and lock in any position or free float.



Task Seat depth adjustment. Seat height adjustment.

DESCRIPTION

DIMENSIONS			SEAT HEIGHT
W	D	H	
IN	IN	IN	IN
mm	mm	mm	mm



1960-2 25 24.5 48.5 16.5-21.5
635 622 1232 419-546
High Back Knee-Tilter with adjustable Headrest. Sliding soft urethane (GL) armcaps. Tilt-tension adjustment with infinite position tilt-lock control. Pneumatic seat height adjustment with height/depth adjustable lumbar support. Seat depth adjustment.
1966-2 As above except with fully upholstered back.



1960-3 25 24.5 48.5 16.5-21.5
635 622 1232 419-546
High Back Multi-Tilter with adjustable Headrest. Sliding soft urethane (GL) armcaps. Seat/back angle adjustable. Tilt-tension adjustment with infinite position tilt-lock control. Pneumatic seat height adjustment with height/depth adjustable lumbar support. Seat depth adjustment.
1966-3 As above except with fully upholstered back.



1960-4 25 24.5 48.5 16.5-21.5
635 622 1232 419-546
High Back Tilter with adjustable Headrest. Sliding soft urethane (GL) armcaps. Seat/back angle adjustment. Tilt-tension adjustment with upright position tilt-lock control. Pneumatic seat height adjustment with height/ depth adjustable lumbar support. Seat depth adjustment.
1966-4 As above except with fully upholstered back.



1961-2 25 24.5 40.5 16.5-21.5
635 622 1029 419-546
High Back Knee-Tilter (no Headrest). Sliding soft urethane (GL) armcaps. Tilt-tension adjustment with infinite position tilt-lock control. Pneumatic seat height adjustment with height/ depth adjustable lumbar support. Seat depth adjustment.
1967-2 As above except with fully upholstered back.



1961-3 25 24.5 40.5 16.5-21.5
635 622 1029 419-546
High Back Multi-Tilter (no Headrest). Sliding soft urethane (GL) armcaps. Seat/back angle adjustment. Tilt-tension adjustment with infinite position tilt-lock control. Pneumatic seat height adjustment with height/ depth adjustable lumbar support. Seat depth adjustment.
1967-3 As above except with fully upholstered back.



1961-4 25 24.5 40.5 16.5-21.5
635 622 1029 419-546
High Back Tilter. Sliding soft urethane (GL) armcaps. Seat/back angle adjustable. Tilt-tension adjustment with upright position tilt-lock control. Seat depth adjustment.
1967-4 As above except with fully upholstered back.

DESCRIPTION

DIMENSIONS			SEAT HEIGHT
W	D	H	
IN	IN	IN	IN
mm	mm	mm	mm



1961-5 25 24.5 40 16.5-21.5
635 622 1016 419-546
High Back Operator. Sliding soft urethane (GL) armcaps. Pneumatic seat height adjustment with height/depth adjustable lumbar support. Seat depth adjustment.
1967-5 As above except with fully upholstered back.



1961-6 25 24.5 40 16.5-21.5
635 622 1016 419-546
High Back Task. Sliding soft urethane (GL) armcaps. Pneumatic seat height adjustment with height/depth adjustable lumbar support. Seat depth adjustment.
1967-6 As above except with fully upholstered back.



1964-5 19.5 24.5 40 16.5-21.5
495 622 1016 419-546
High Back Armless Operator. Independently adjustable forward/rearward seat angle adjustment. Independent back angle adjustment. Pneumatic seat height adjustment with height/depth adjustable lumbar support. Seat depth adjustment.
1969-5 As above except with fully upholstered back.



1964-6 19.5 24.5 40 16.5-21.5
495 622 1016 419-546
Armless High Back Task. Pneumatic seat height adjustment. Height/ depth adjustable lumbar support. Seat depth adjustment.
1969-6 As above except with fully upholstered back.



1962 25 24.5 40 17.5
635 622 1016 445
Armchair. Black tubular steel cantilever base. Fixed height "T" arms with soft urethane armcaps.
1968 As above except with fully upholstered back.



1965 11 1.5 7.5 -
279 38 191 -
Upholstered Headrest. Height/angle adjustment can be retrofitted on all chairs.

All models are available in Leather or Leather/Mock Leather. Add "LM" after first 4 digits of model #. See Price List for details.

Global - Canada
The Global Group, 1350 Flint Rd., Downsview ON Canada M3J 2J7
Sales & Marketing: Tel (1-877) 446-2251
Customer Service: Fax (800) 361-3182
Government Customer Service: Fax (416) 739-6319

Global - U.S.A.
17 West Stow Road P.O. Box 562
Marlton New Jersey U.S.A. 08053
Tel (856) 596-3390 (800) 220-1900
Fax (856) 596-5684

Global - International
560 Supertest Road Downsview
Ontario Canada M3J 2M6
Tel (416) 661-3660 (800) 668-5870
Fax (416) 667-1821

GGI Office Furniture (UK) Ltd.
Global Way Darwen
Lancashire UK BB3 0RW
Tel +44(0) 1254 778500
Fax +44(0) 1254 778519

Visit us on the World Wide Web at www.globaltotaloffice.com

Offices throughout Canada, United States, United Kingdom, France, Brazil, Australia and Italy. Distribution around the world. A member of the Global Group.

© 2008 © W Trade-Marks of GLOBAL TOTAL OFFICE. These products may be covered by one or more issued patents or pending patent applications in Canada, the U.S. and elsewhere. All intellectual property rights in applicable trademarks, patents and industrial designs are strictly reserved. Specifications are correct at time of printing. Printed in Canada. Creative / Global Group Design Center 090709 / 08.01.99

